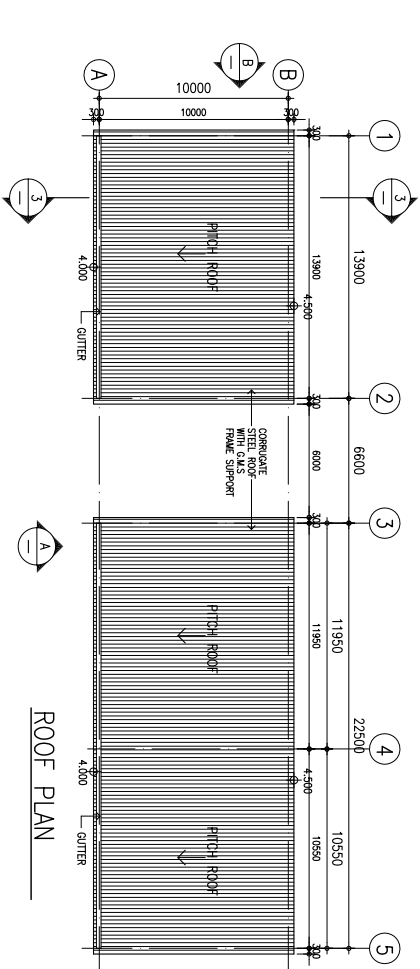
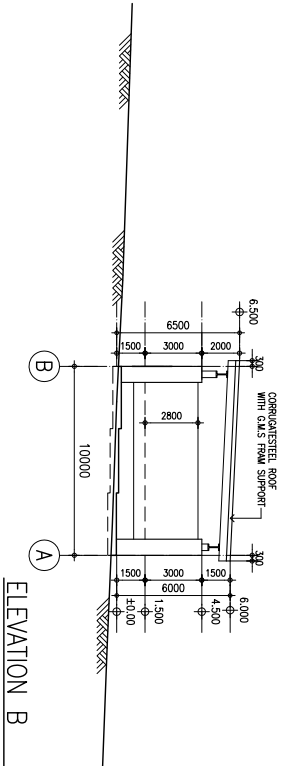


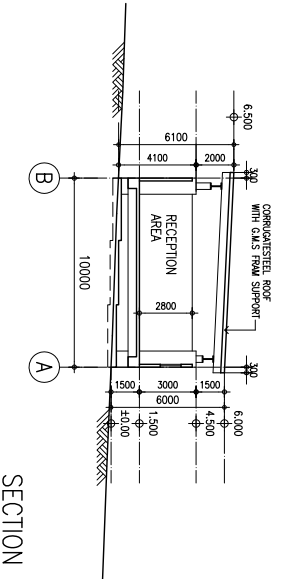
ELEVATION A



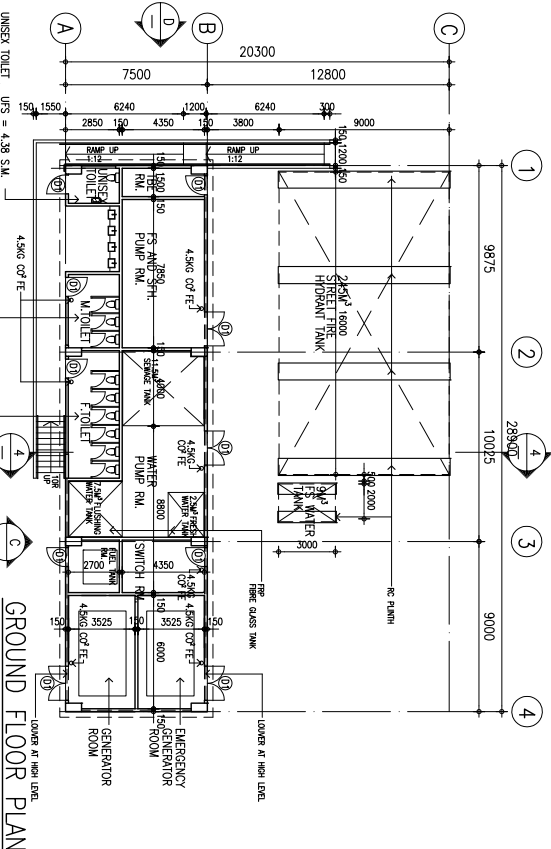
ROOF PLAN



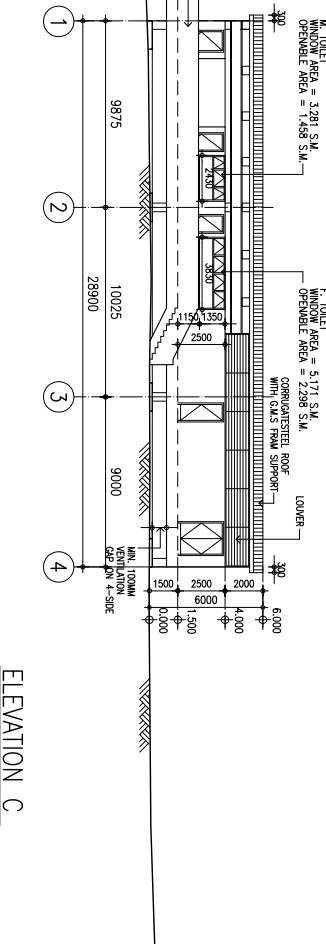
ELEVATION B



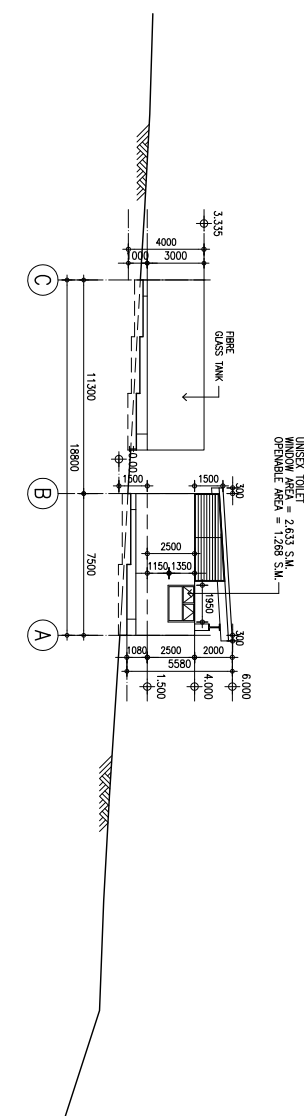
SECTION 3-3



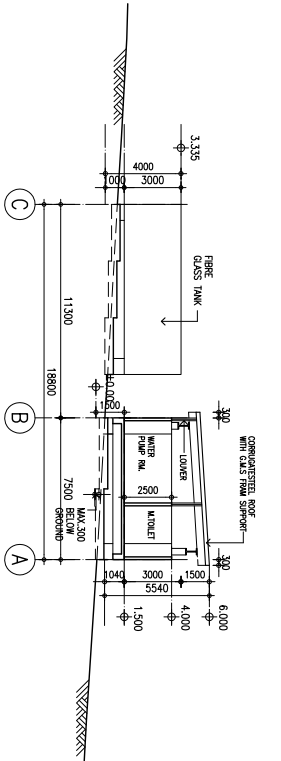
GROUND FLOOR PLAN



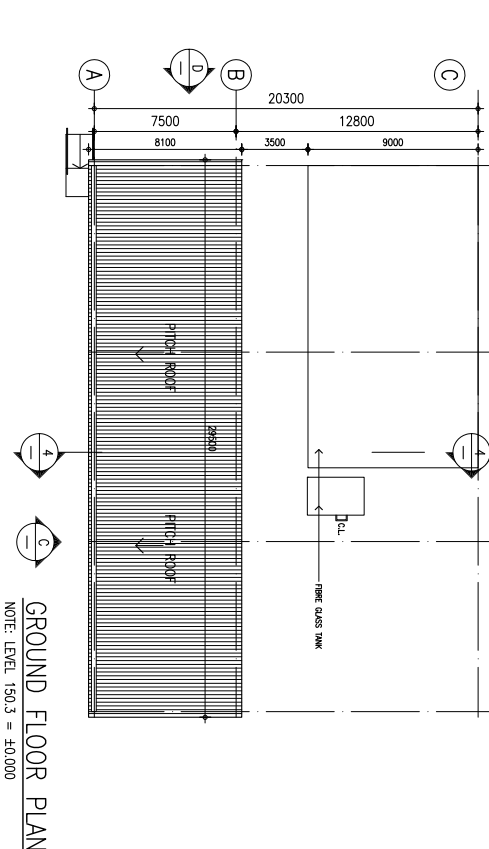
ELEVATION C



ELEVATION D



SECTION 4-4



GROUND FLOOR PLAN

NOTE: LEVEL 150.3 = ±0.000

RECEPTION, ARMS AMMUNITION STORE
AND GENERAL STORE BLOCK
(PHASE 1)
NOTE: LEVEL +150.0mPD = ±0.000 AS SHOWN ON DRAWING
MIN. 100MM GAP WOULD BE ALLOWED BETWEEN THE GROUND
AND GROUND FLOOR SLAB ON 4-SIDES FOR VENTILATION.

FOR TENDERING
ADVANCE WORKS

REV.	DATE	CHECKED BY	APPROVED BY
0	20.11.2010		
1	10.03.2010		
2	14.03.2010		
3	07.06.2010		
4	27.01.10		

PROJECT
PROPOSED SHOOTING RANGE
AT PILLAR POINT
VALLEY LAND FILL
TURN MUN (PHASE 1)

Drawing No.	B-03	Scale :	1:200
Project Ref		File Name :	E :
Signature for Submission/Continuation			

FLOOR PLAN, SECTION, ELEVATION
RECEPTION, ARMS AMMUNITION &
STORE, E/M SERVICES BLOCK
(TEMPORARY BUILDING)

THOMASCHOW
ARCHITECTS LIMITED